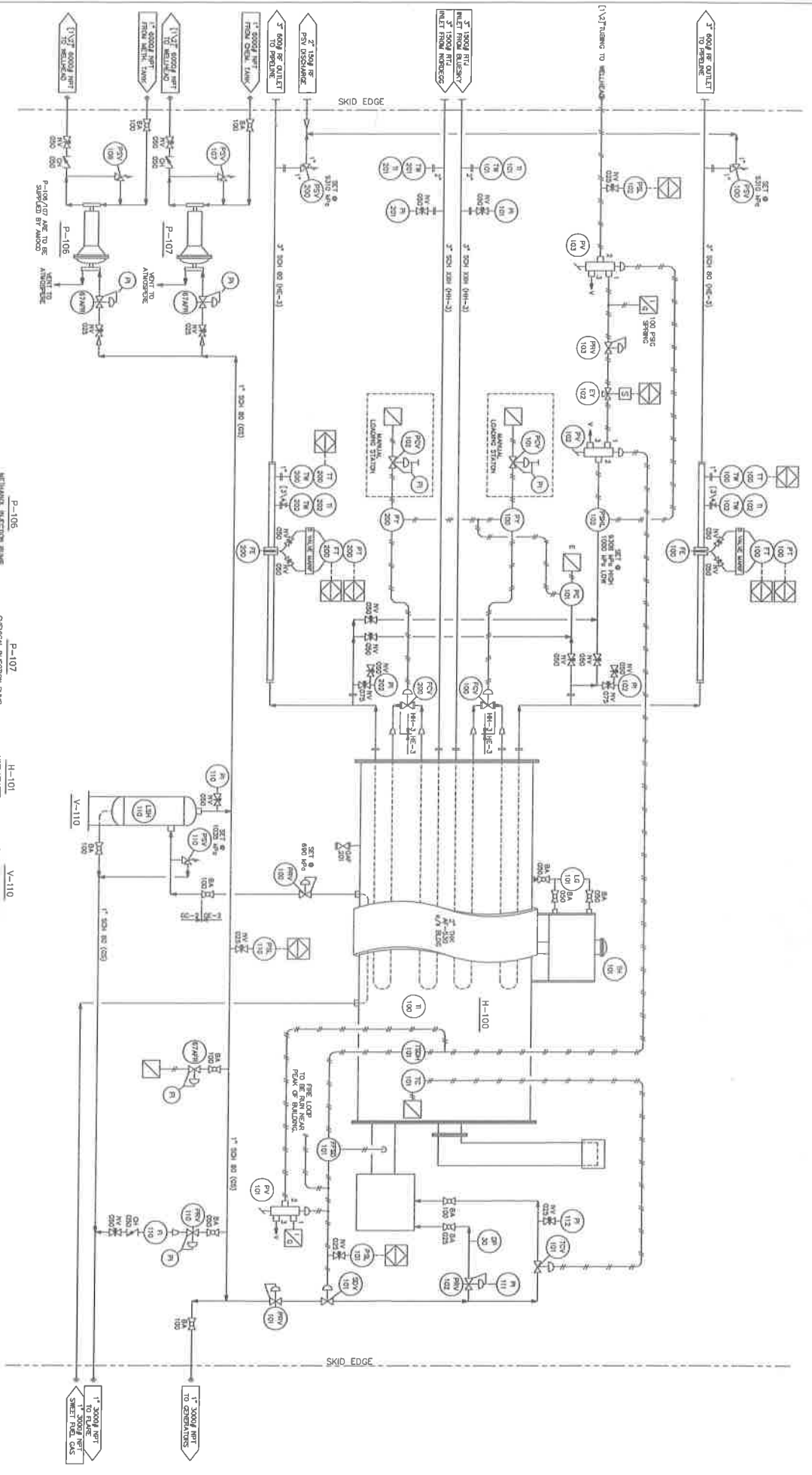


THIS DRAWING IS THE EXCLUSIVE PROPERTY OF PRESSON MANUFACTURING LTD. AND MAY NOT BE COPIED OR COMMUNICATED TO A THIRD PARTY WITHOUT THE WRITTEN AUTHORIZATION OF PRESSON MANUFACTURING LTD.



LEGEND:
 = TO RVU

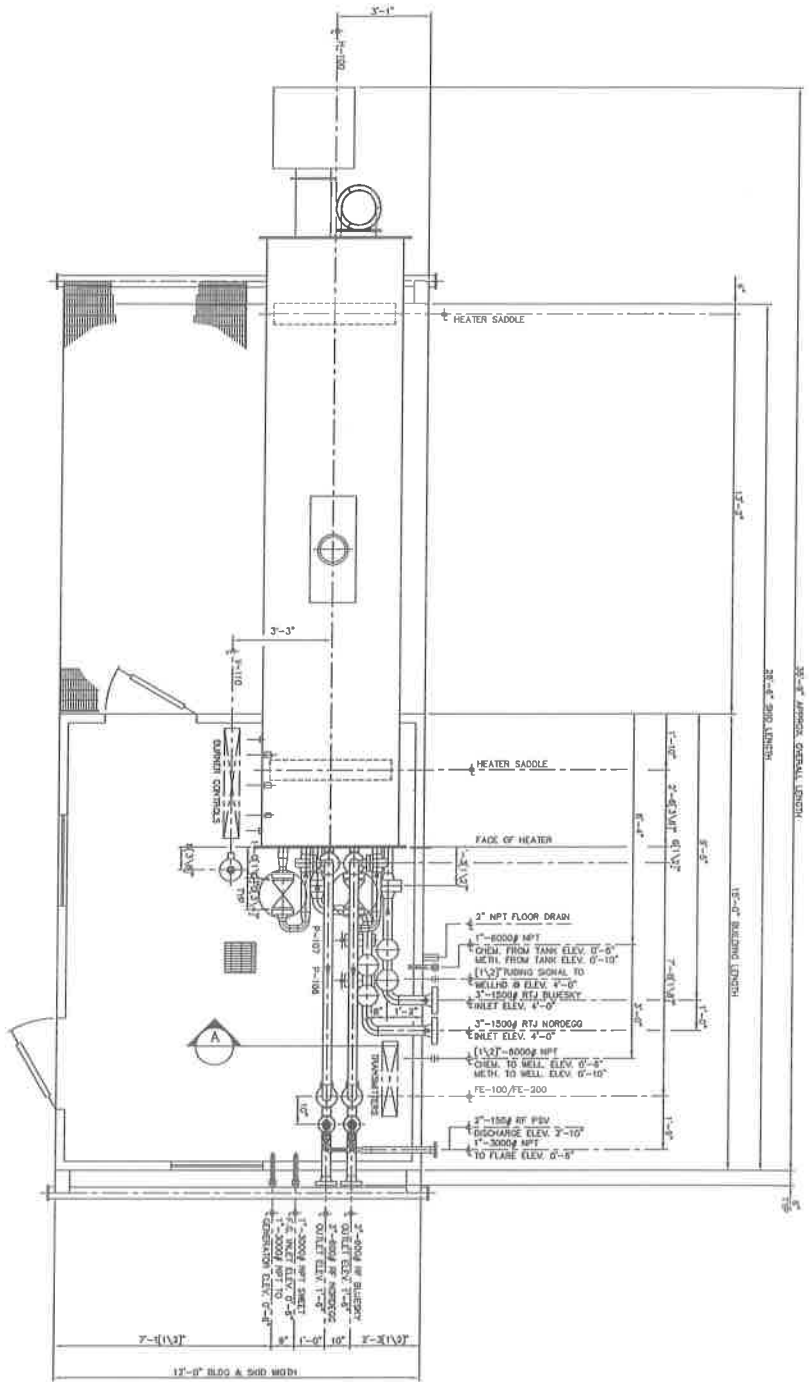
ITEM	DESCRIPTION	QTY	UNIT	REV	DATE	BY	CHK
1	MANUAL LOADING STATION	2	UNIT				
2	MANUAL LOADING STATION	2	UNIT				
3	MANUAL LOADING STATION	2	UNIT				
4	MANUAL LOADING STATION	2	UNIT				
5	MANUAL LOADING STATION	2	UNIT				
6	MANUAL LOADING STATION	2	UNIT				
7	MANUAL LOADING STATION	2	UNIT				
8	MANUAL LOADING STATION	2	UNIT				
9	MANUAL LOADING STATION	2	UNIT				
10	MANUAL LOADING STATION	2	UNIT				

PRESSON MANUFACTURING LTD.
 ENGINEERING - DESIGN - FABRICATION

NO.	REV.	DATE	BY	CHK	DESCRIPTION
1		02/18/24			ISSUE FOR CONSTRUCTION
2		02/18/24			ISSUE FOR CONSTRUCTION

AMOCO CANADA PETROLEUM CO. B5551-01
 PINE CREEK WELL TIE IN
 LSD 02-17-57-19 WSM
 LINE HEATER PACKAGE
 P & ID
 B5551-011

THIS DRAWING IS THE EXCLUSIVE PROPERTY OF PRESSON MANUFACTURING LTD. AND MAY NOT BE COPIED OR COMMUNICATED TO A THIRD PARTY WITHOUT THE WRITTEN AUTHORIZATION OF PRESSON MANUFACTURING LTD.



- NOTES:
1. ALL PIPING MATERIAL, WELDING AND FINISHES TO BE AS PER INSTRUMENT LIST.
 2. ELEVATIONS SHOWN ARE FROM TOP OF CROWN PLATE, REF. ELEV. 0'-0"
 3. ESTIMATED WEIGHT: 28000 LBS.

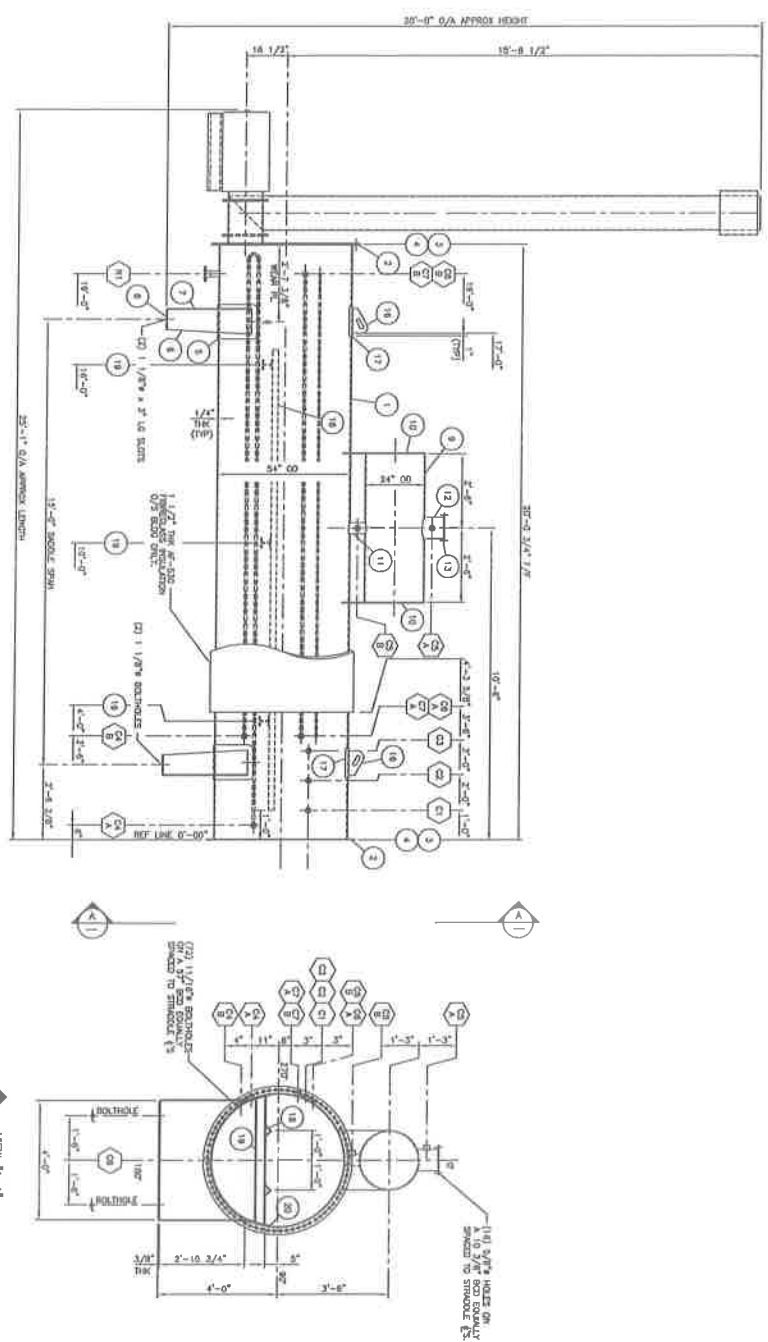
NO.	DESCRIPTION	DATE	BY	CHKD.	APP'D.
1	DESIGN FOR CONSTRUCTION	09/17/94			
2	RELOCATE IN-108 & IN-107	10/02/94			
3	GENERAL REVISION	07/10/94			
4	DESIGN FOR CONSTRUCTION	09/17/94			

PROJECT NO.	B5551-310
CUSTOMER	AMOCO CANADA PETROLEUM CO.
LOCATION	PINE CREEK WELL TIE IN
DATE	LSD 02-17-57-19 WSM
DESCRIPTION	LINE HEATER PACKAGE GENERAL ARRANGEMENT
DATE	09/17/94
APP'D.	
CHECKED	
DESIGNED	
DATE	09/17/94

PRESSON MANUFACTURING LTD. ENGINEERING — DESIGN — FABRICATION	

THIS DRAWING IS THE EXCLUSIVE PROPERTY OF PRESSON MANUFACTURING LTD. AND MAY NOT BE COPIED OR COMMUNICATED TO A THIRD PARTY WITHOUT THE WRITTEN AUTHORIZATION OF PRESSON MANUFACTURING LTD.

BILL OF MATERIALS



- NOTES:
- 1) HEATER TO HAVE RIGHT HAND CONTROLS WHEN VIEWED FROM REAR.
 - 2) DIMENSIONS ARE NON-REMOVABLE.
 - 3) DIMENSIONS ARE NON-REMOVABLE.
 - 4) HEATER TO BE ASSEMBLED PER SPEC-994.
 - 5) HEATER TO BE ASSEMBLED PER SPEC-994.
 - 6) NON-REMOVABLE PORTING TO RECEIVE (1) COAL BURNER AND (1) COAL FEED CRUIER.

- 7) FUEL PIPING AND STACK TO RECEIVE (1) COAL FEED CRUIER.
- 8) REFER TO DWG. NO. 85551-411 FOR HEATER DETAILS.
- 9) REFER TO DWG. NO. 85551-411 FOR HEATER DETAILS.
- 10) SHARP CORNER 7.5\"/>
- 11) REFER TO DWG. NO. 85551-411 FOR HEATER DETAILS.
- 12) REFER TO DWG. NO. 85551-410 FOR COAL DETAILS.

NO.	QUANTITY	DESCRIPTION	UNIT	DATE
0	1	HEATER FOR CONSTRUCTION	EA	3/4/2018

PM PRESSON MANUFACTURING LTD.
 ENGINEERING - DESIGN - MANUFACTURE

ITEM	QTY	DESCRIPTION	UNIT	REMARKS
1	1	SKILL	1	5A-38
2	1	PLATE	1	5A-38
3	1	CONCRETE	1	5A-40
4	1	WELD	1	5A-38
5	1	WELD	1	5A-38
6	1	WELD	1	5A-38
7	1	WELD	1	5A-38
8	1	WELD	1	5A-38
9	1	WELD	1	5A-38
10	1	WELD	1	5A-38
11	1	WELD	1	5A-38
12	1	WELD	1	5A-38
13	1	WELD	1	5A-38
14	1	WELD	1	5A-38
15	1	WELD	1	5A-38
16	1	WELD	1	5A-38
17	1	WELD	1	5A-38
18	1	WELD	1	5A-38
19	1	WELD	1	5A-38
20	1	WELD	1	5A-38
21	1	WELD	1	5A-38
22	1	WELD	1	5A-38
23	1	WELD	1	5A-38
24	1	WELD	1	5A-38
25	1	WELD	1	5A-38
26	1	WELD	1	5A-38
27	1	WELD	1	5A-38
28	1	WELD	1	5A-38
29	1	WELD	1	5A-38
30	1	WELD	1	5A-38
31	1	WELD	1	5A-38
32	1	WELD	1	5A-38
33	1	WELD	1	5A-38
34	1	WELD	1	5A-38
35	1	WELD	1	5A-38
36	1	WELD	1	5A-38
37	1	WELD	1	5A-38
38	1	WELD	1	5A-38
39	1	WELD	1	5A-38
40	1	WELD	1	5A-38
41	1	WELD	1	5A-38
42	1	WELD	1	5A-38
43	1	WELD	1	5A-38
44	1	WELD	1	5A-38
45	1	WELD	1	5A-38
46	1	WELD	1	5A-38
47	1	WELD	1	5A-38
48	1	WELD	1	5A-38
49	1	WELD	1	5A-38
50	1	WELD	1	5A-38
51	1	WELD	1	5A-38
52	1	WELD	1	5A-38
53	1	WELD	1	5A-38
54	1	WELD	1	5A-38
55	1	WELD	1	5A-38
56	1	WELD	1	5A-38
57	1	WELD	1	5A-38
58	1	WELD	1	5A-38
59	1	WELD	1	5A-38
60	1	WELD	1	5A-38
61	1	WELD	1	5A-38
62	1	WELD	1	5A-38
63	1	WELD	1	5A-38
64	1	WELD	1	5A-38
65	1	WELD	1	5A-38
66	1	WELD	1	5A-38
67	1	WELD	1	5A-38
68	1	WELD	1	5A-38
69	1	WELD	1	5A-38
70	1	WELD	1	5A-38
71	1	WELD	1	5A-38
72	1	WELD	1	5A-38
73	1	WELD	1	5A-38
74	1	WELD	1	5A-38
75	1	WELD	1	5A-38
76	1	WELD	1	5A-38
77	1	WELD	1	5A-38
78	1	WELD	1	5A-38
79	1	WELD	1	5A-38
80	1	WELD	1	5A-38
81	1	WELD	1	5A-38
82	1	WELD	1	5A-38
83	1	WELD	1	5A-38
84	1	WELD	1	5A-38
85	1	WELD	1	5A-38
86	1	WELD	1	5A-38
87	1	WELD	1	5A-38
88	1	WELD	1	5A-38
89	1	WELD	1	5A-38
90	1	WELD	1	5A-38
91	1	WELD	1	5A-38
92	1	WELD	1	5A-38
93	1	WELD	1	5A-38
94	1	WELD	1	5A-38
95	1	WELD	1	5A-38
96	1	WELD	1	5A-38
97	1	WELD	1	5A-38
98	1	WELD	1	5A-38
99	1	WELD	1	5A-38
100	1	WELD	1	5A-38

AMOCO CANADA PETROLEUM CO. B5551-40

PINE OREX
 LSD 02-17-57-19 WSM

1.0 MM BRU/HR INDIRECT FIRED HEATER
 54" OD X 20'-0" H X 3/4" LG

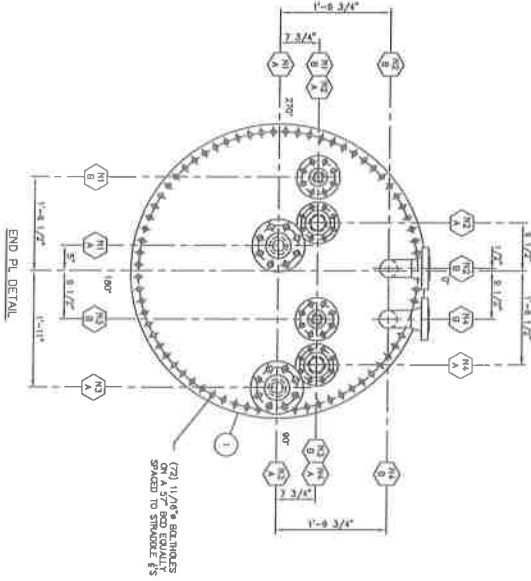
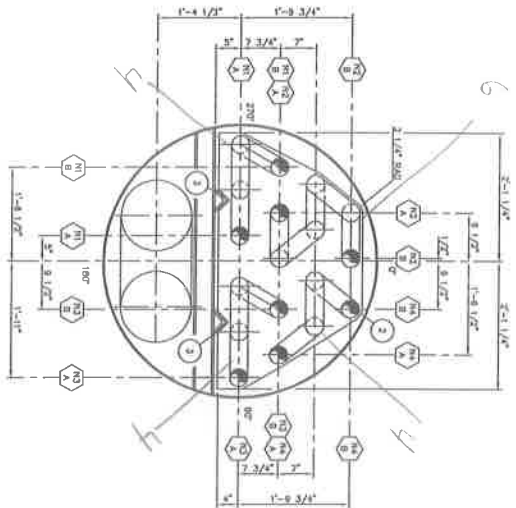
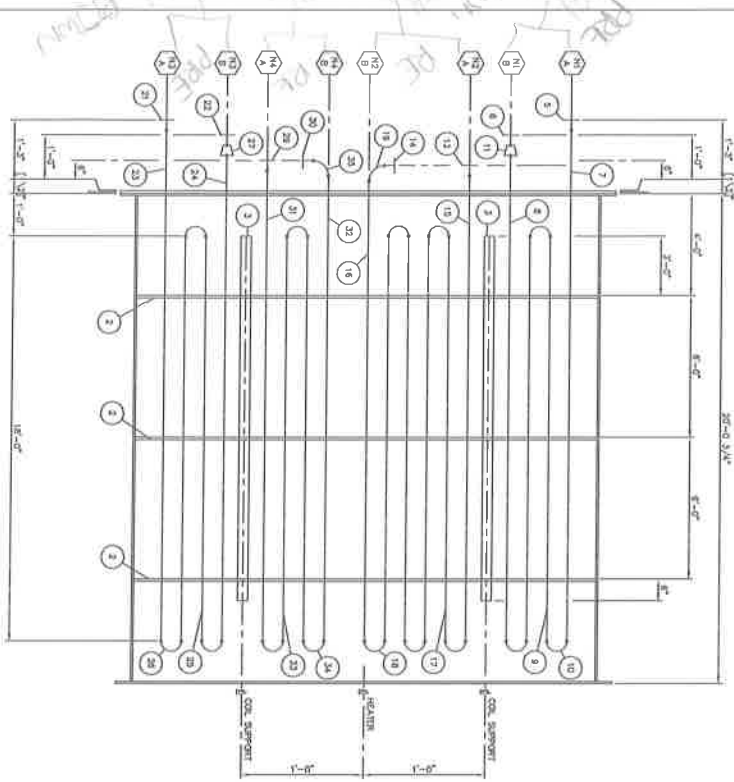
DATE: 3/4/2018
 TIME: 10:30 AM
 BY: [Signature]

THIS DRAWING IS THE EXCLUSIVE PROPERTY OF PRESSION MANUFACTURING LTD. AND MAY NOT BE COPIED OR COMMUNICATED TO A THIRD PARTY WITHOUT THE WRITTEN AUTHORIZATION OF PRESSION MANUFACTURING LTD.

BILL OF MATERIALS

NO.	REV.	DESCRIPTION	QTY.	UOM.
1		END PLATE	1	SA-105H
2		SUPPORT PL. 6'-2 1/2" x 3/8" PL. X 3'-4" LG.	2	SA-105H
3		SUPPORT 3" x 3" ANGLE X 18'-8" LG.	2	SA-105H
4		1" 1500# S&W STEAM FLD.	1	SA-105H
5		1" 1500# S&W STEAM FLD.	1	SA-105H
6		1" 1500# S&W STEAM FLD.	1	SA-105H
7		1" 1500# S&W STEAM FLD.	1	SA-105H
8		1" 1500# S&W STEAM FLD.	1	SA-105H
9		1" 1500# S&W STEAM FLD.	1	SA-105H
10		1" 1500# S&W STEAM FLD.	1	SA-105H
11		1" 1500# S&W STEAM FLD.	1	SA-105H
12		1" 1500# S&W STEAM FLD.	1	SA-105H
13		1" 1500# S&W STEAM FLD.	1	SA-105H
14		1" 1500# S&W STEAM FLD.	1	SA-105H
15		1" 1500# S&W STEAM FLD.	1	SA-105H
16		1" 1500# S&W STEAM FLD.	1	SA-105H
17		1" 1500# S&W STEAM FLD.	1	SA-105H
18		1" 1500# S&W STEAM FLD.	1	SA-105H
19		1" 1500# S&W STEAM FLD.	1	SA-105H
20		1" 1500# S&W STEAM FLD.	1	SA-105H
21		1" 1500# S&W STEAM FLD.	1	SA-105H
22		1" 1500# S&W STEAM FLD.	1	SA-105H
23		1" 1500# S&W STEAM FLD.	1	SA-105H
24		1" 1500# S&W STEAM FLD.	1	SA-105H
25		1" 1500# S&W STEAM FLD.	1	SA-105H
26		1" 1500# S&W STEAM FLD.	1	SA-105H
27		1" 1500# S&W STEAM FLD.	1	SA-105H
28		1" 1500# S&W STEAM FLD.	1	SA-105H
29		1" 1500# S&W STEAM FLD.	1	SA-105H
30		1" 1500# S&W STEAM FLD.	1	SA-105H
31		1" 1500# S&W STEAM FLD.	1	SA-105H
32		1" 1500# S&W STEAM FLD.	1	SA-105H
33		1" 1500# S&W STEAM FLD.	1	SA-105H
34		1" 1500# S&W STEAM FLD.	1	SA-105H
35		1" 1500# S&W STEAM FLD.	1	SA-105H

NOTES:
 1. AMOCO APPROVED WELD PROCEDURES ONE T.
 2. WELDS UNDER 1/2" TO EXCEED 1/2" T.
 3. FOR 1/2" TO EXCEED 1/2" T. USE 1/2" T. WELDING ROD.
 4. FOR 1/2" TO EXCEED 1/2" T. USE 1/2" T. WELDING ROD.
 5. SEE AISC FOR FLANGE FITTINGS & PIPE.



(2) 1 1/8" BOLTING ON A 5" ROD EQUALLY SPACED TO SHOULDERS

COIL DESIGN DATA

DESIGN AND FABRICATE ACCORDING TO ANSI B31.3 and B16.5, 1986 EDITION. REGISTER WITH THE ALBERTA BOILERS BRANCH.

ITEM	DESCRIPTION	QTY.	UOM.
1	COIL	1	SA-105H
2	END PL. DETAIL	1	SA-105H
3	COIL SUPPORT	2	SA-105H
4	HEAVY	2	SA-105H
5	COIL SUPPORT	2	SA-105H
6	HEAVY	2	SA-105H
7	COIL SUPPORT	2	SA-105H
8	HEAVY	2	SA-105H
9	COIL SUPPORT	2	SA-105H
10	HEAVY	2	SA-105H
11	COIL SUPPORT	2	SA-105H
12	HEAVY	2	SA-105H
13	COIL SUPPORT	2	SA-105H
14	HEAVY	2	SA-105H
15	COIL SUPPORT	2	SA-105H
16	HEAVY	2	SA-105H
17	COIL SUPPORT	2	SA-105H
18	HEAVY	2	SA-105H
19	COIL SUPPORT	2	SA-105H
20	HEAVY	2	SA-105H
21	COIL SUPPORT	2	SA-105H
22	HEAVY	2	SA-105H
23	COIL SUPPORT	2	SA-105H
24	HEAVY	2	SA-105H
25	COIL SUPPORT	2	SA-105H
26	HEAVY	2	SA-105H
27	COIL SUPPORT	2	SA-105H
28	HEAVY	2	SA-105H
29	COIL SUPPORT	2	SA-105H
30	HEAVY	2	SA-105H
31	COIL SUPPORT	2	SA-105H
32	HEAVY	2	SA-105H
33	COIL SUPPORT	2	SA-105H
34	HEAVY	2	SA-105H
35	COIL SUPPORT	2	SA-105H
36	HEAVY	2	SA-105H
37	COIL SUPPORT	2	SA-105H
38	HEAVY	2	SA-105H
39	COIL SUPPORT	2	SA-105H
40	HEAVY	2	SA-105H
41	COIL SUPPORT	2	SA-105H
42	HEAVY	2	SA-105H
43	COIL SUPPORT	2	SA-105H
44	HEAVY	2	SA-105H
45	COIL SUPPORT	2	SA-105H
46	HEAVY	2	SA-105H
47	COIL SUPPORT	2	SA-105H
48	HEAVY	2	SA-105H
49	COIL SUPPORT	2	SA-105H
50	HEAVY	2	SA-105H

NO.	REV.	DESCRIPTION	DATE
0		ISSUED FOR CONSTRUCTION	04/29/78
1			
2			
3			
4			
5			
6			
7			
8			
9			

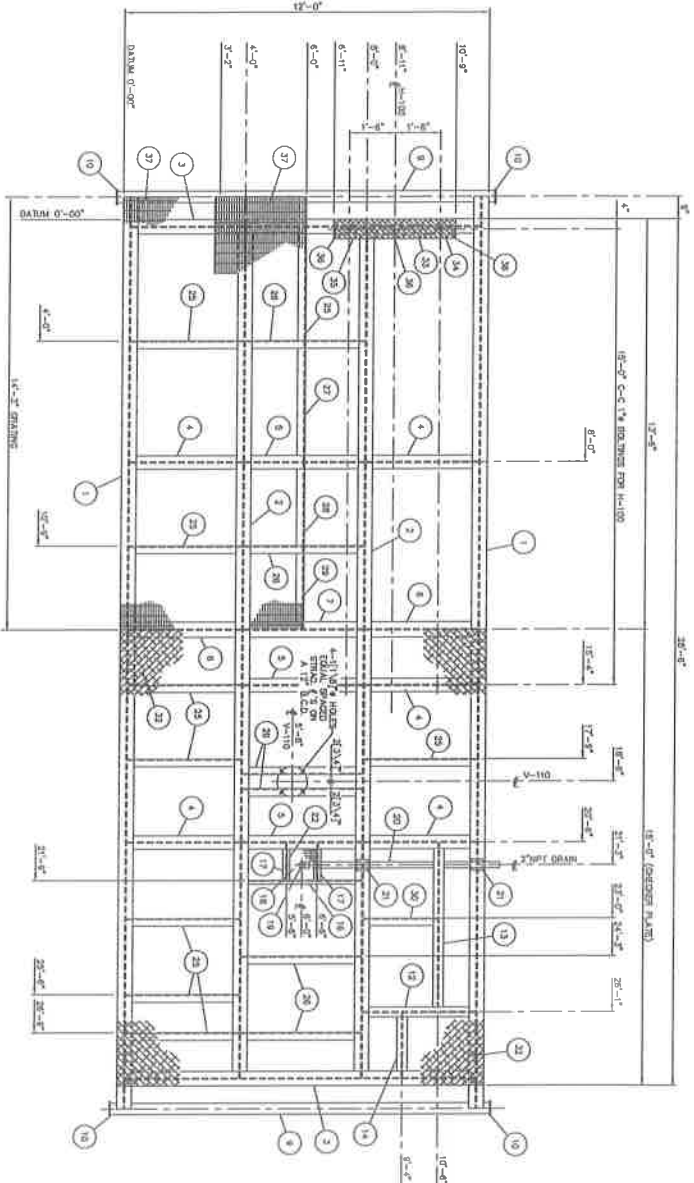
PRESSION MANUFACTURING LTD.
 ENGINEERING - DESIGN - FABRICATING

ESTIMATED WEIGHT	2700 LB	SA-105H	88551-50
AMOCO CANADA PETROLEUM CO.			
PINE CREEK			
LSD 02-17-57-19 WSM			
1000-PH-54			
COIL DETAIL			
DATE	04/29/78	BY	BS551-510

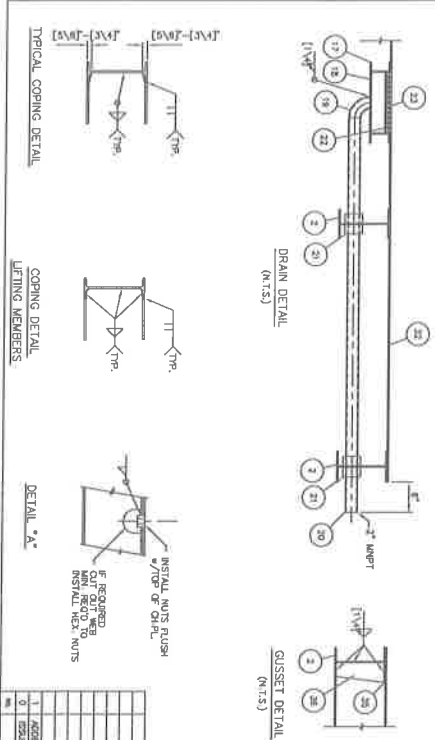
THIS DRAWING IS THE EXCLUSIVE PROPERTY OF PRESSON MANUFACTURING LTD. AND MAY NOT BE COPIED OR COMMUNICATED TO A THIRD PARTY WITHOUT THE WRITTEN AUTHORIZATION OF PRESSON MANUFACTURING LTD.

BILL OF MATERIALS

ITEM	QTY	DESCRIPTION	UNIT
1	2	MAIN BEAM	Q0231-448
2	2	MAIN BEAM	Q0231-448
3	2	MAIN BEAM	Q0231-448
4	2	MAIN BEAM	Q0231-448
5	2	CROSS BEAM	Q0231-448
6	2	CROSS BEAM	Q0231-448
7	2	CROSS BEAM	Q0231-448
8	2	CROSS BEAM	Q0231-448
9	2	CROSS BEAM	Q0231-448
10	2	CROSS BEAM	Q0231-448
11	2	CROSS BEAM	Q0231-448
12	2	CROSS BEAM	Q0231-448
13	2	CROSS BEAM	Q0231-448
14	2	CROSS BEAM	Q0231-448
15	2	CROSS BEAM	Q0231-448
16	2	CROSS BEAM	Q0231-448
17	2	CROSS BEAM	Q0231-448
18	2	CROSS BEAM	Q0231-448
19	2	CROSS BEAM	Q0231-448
20	2	CROSS BEAM	Q0231-448
21	2	CROSS BEAM	Q0231-448
22	2	CROSS BEAM	Q0231-448
23	2	CROSS BEAM	Q0231-448
24	2	CROSS BEAM	Q0231-448
25	2	CROSS BEAM	Q0231-448
26	2	CROSS BEAM	Q0231-448
27	2	CROSS BEAM	Q0231-448
28	2	CROSS BEAM	Q0231-448
29	2	CROSS BEAM	Q0231-448
30	2	CROSS BEAM	Q0231-448
31	2	CROSS BEAM	Q0231-448
32	2	CROSS BEAM	Q0231-448
33	2	CROSS BEAM	Q0231-448
34	2	CROSS BEAM	Q0231-448
35	2	CROSS BEAM	Q0231-448
36	2	CROSS BEAM	Q0231-448
37	2	CROSS BEAM	Q0231-448



PLAN VIEW



NO.	DESCRIPTION	QTY	DATE	BY	CHKD.
1	ADD HEIGHT SADDLE SUPPORT GUSSET	ONE	5/1/73		
2	SIZE FOR CONSTRUCTION		5/1/73		

1521-4

PRESSON
MANUFACTURING LTD.
MANUFACTURING - SERVICE - FABRICATING

AMOCO CANADA PETROLEUM CO. B5551-10

PINE CREEK WGL TIE-IN
LSD 02-17-57-19 WSM

LINE HEATER PACKAGE (OIL ZONE)
SMD: 12'-0" WIDE x 25'-6" LG x W10" @ 26#

DATE: 5/1/73

BY: [Signature]

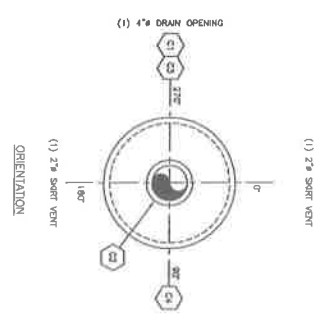
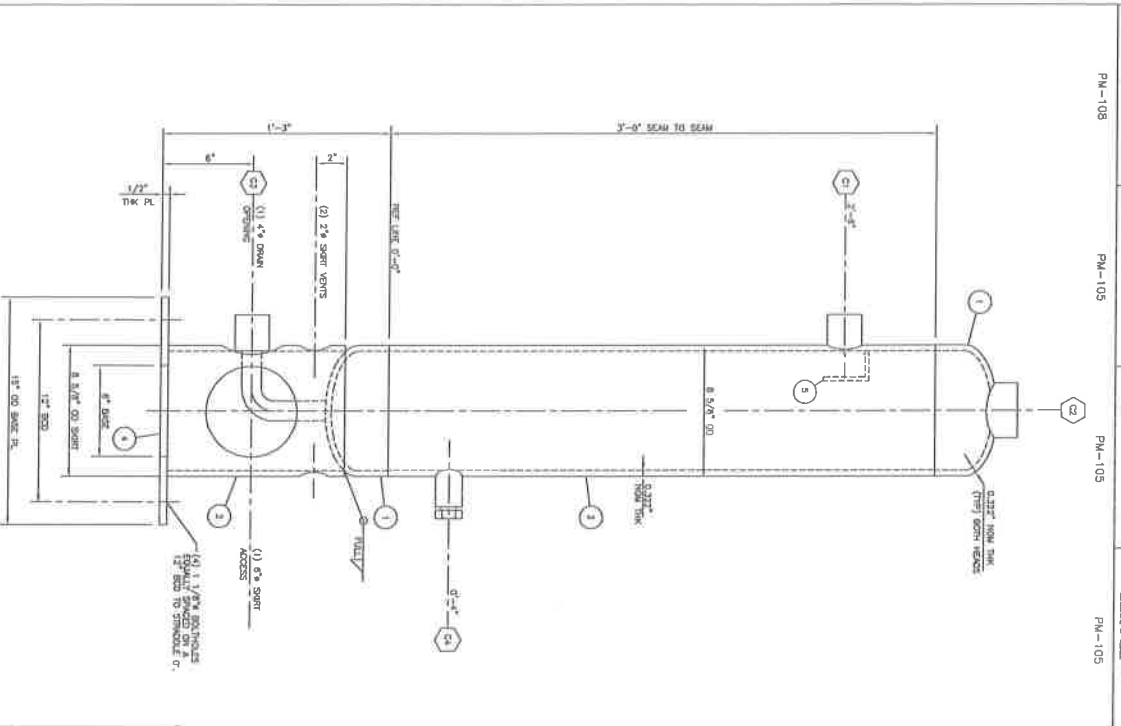
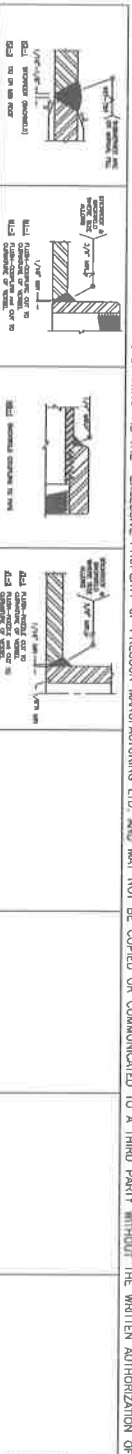
CHKD: [Signature]

B5551-110

- NOTES:
1. ALL DIMENSIONS ARE FROM TOP OF CROSS PLATE, ASSUME GUY 4" C-C
 2. GUYENED PLATE FLOOR TO BE STICH INCLD TO ALL SIDE MEMBERS AND PERIMETER
 3. CONNECTIONS TO BE MADE TO ALL MEMBERS
 4. INSULATE UNDERSIDE BUILDING AREA w/ 2"THK SFEATHANE 40 FOAM INSULATION 1/4"
 5. PAINT ONE COAT INTERIOR AND ONE COAT PINKER FINISH w/ ONE COAT INTERIOR AND ONE COAT EXTERIOR PINKER FINISH
 6. DRAWING SOUTH 5/100 SW

THIS DRAWING IS THE EXCLUSIVE PROPERTY OF PRESSON MANUFACTURING LTD. AND MAY NOT BE COPIED OR COMMUNICATED TO A THIRD PARTY WITHOUT THE WRITTEN AUTHORIZATION OF PRESSON MANUFACTURING LTD.

BILL OF MATERIALS



- GENERAL NOTES**
1. REFERENCE PROCEDURES W-714.2
 2. SURVEY CONTROL PROGRAM 49-1137
 3. ALL DIMENSIONS ARE IN MILLIMETERS UNLESS OTHERWISE SPECIFIED
 4. ALL DIMENSIONS TO CENTER UNLESS OTHERWISE SPECIFIED
 5. DIMENSIONS TO SURFACE UNLESS OTHERWISE SPECIFIED
 6. SURFACE FINISH: 320-325
 7. WELD SIZE: 1/8\"/>

GENERAL DATA

DESIGN NO.	PM-110
REV.	02
DATE	17/01/98
BY	...
CHECKED BY	...
APPROVED BY	...

NOTES:

- 1) 1/2\"/>

ITEM NO.	PART NO.	DESCRIPTION	QTY	UNIT	REMARKS	DATE
1	HEAD	1\"/>				
2	SKIRT	8\"/>				
3	SKIRT FL.	8\"/>				
4	SKIRT FL.	8\"/>				
5	SKIRT FL.	8\"/>				
6	SKIRT FL.	8\"/>				
7	SKIRT FL.	8\"/>				
8	SKIRT FL.	8\"/>				
9	SKIRT FL.	8\"/>				
10	SKIRT FL.	8\"/>				
11	SKIRT FL.	8\"/>				
12	SKIRT FL.	8\"/>				
13	SKIRT FL.	8\"/>				
14	SKIRT FL.	8\"/>				
15	SKIRT FL.	8\"/>				
16	SKIRT FL.	8\"/>				
17	SKIRT FL.	8\"/>				
18	SKIRT FL.	8\"/>				
19	SKIRT FL.	8\"/>				
20	SKIRT FL.	8\"/>				
21	SKIRT FL.	8\"/>				
22	SKIRT FL.	8\"/>				
23	SKIRT FL.	8\"/>				
24	SKIRT FL.	8\"/>				
25	SKIRT FL.	8\"/>				
26	SKIRT FL.	8\"/>				
27	SKIRT FL.	8\"/>				
28	SKIRT FL.	8\"/>				
29	SKIRT FL.	8\"/>				
30	SKIRT FL.	8\"/>				

MANUFACTURER
AMOCO CANADA PETROLEUM CO.
88551-21

PINE CRECK
 LSD 02-17-57-19 WSM

FUEL GAS SCRUBBER (V-110)
 8 5/8" OD x 3'-0" S/S x 250 PSIG @ 200°F
 219 mm OD x 914 mm S/S x 1724 kPa @ 93°C

DATE 14/02/98

REV. 02

BY ...

CHECKED BY ...

APPROVED BY ...

PRESSON MANUFACTURING LTD.
 ENGINEERING - DESIGN - FABRICATION

88551-211